

Increased security due to the integration of the functions based on the Mini-ECDIS.

Security due to the new module AIS/ARPA and its targets data base.*

Security provided thanks to JRC or Koden RADAR integration.*

- The TURBOWIN has been specifically developed for fishermen who demand always more from their plotter.
- Thanks to the simple and clear presentation of complex but vital information, such as Targets, Tracks, Marks, Areas, Tidal Flows, 3D Imaging, Sediment Charts, ..., the operator's workload is considerably lightened.
- TURBOWIN is the first certified Mini-ECDIS. Defined by joint efforts of UKHO (The United Kingdom Hydrographic Office), MCA (Maritime & Coastguard Agency) and Sea Fish Industry Authority, it becomes a navigation software standard applied to fishing.
- SODENA combines powerful navigation tools with fishing management to make fishing easier, safer and more productive.
- TURBOWIN allows the user to overlay fishing data (Tracks, Marks, ...) over the digital high quality hydrographic charts in the S57 format from official hydrographic services or from private ones like Chartworld or C-MAP. Not forgetting direct reading of data from most existing on the market plotters, so you do not lose any of your historical information.



S57 charts with AIS/RADAR overlay



Day black back mode

* Optional modules.

TURBOWIN®

DESIGNED FOR FISHERMEN BY FISHERMEN

Easy to operate. Most commonly used functions are easily accessible from the toolbar thanks to the trackball that provides exact visual onscreen control as well as with the help of an optional backlit keyboard. The superior power of TURBOWIN is clear to see.

Standard features

- 2D contour drawing with Personal Bathy Database from echosounder.
- Powerful fishing data management thanks to files.
- Tide height graphs and prediction.
- Autopilot interface for vessel steering.
- DECCA, TORAN, LORAN hyperboles and UTM grids display.
- Weather forecast display (GRIB files).
- Route planning and its checking (only with S.57 official charts).
- Direct read of Maxsea, Quadfish, Transas data.
- Conversions from Trax, Fishmaster, CVP, Koden, Shipmate, Furuno, MLR.
- Almost unlimited fishing data display (Marks, Traces, Areas, ...)*
- Reading of official Primar S57 charts from official hydrographic services with anti-grounding and anti-collision warning.
- Reading of private C-Map charts and Chartworld Direct ENC.

Optional features

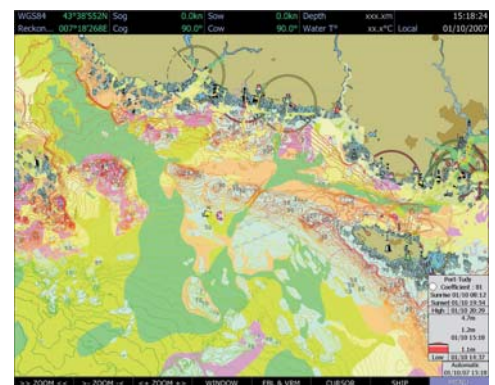
- Tidal stream prediction and display – saves on fuel.
- 3D imaging with free Depth Database.
- New AIS & ARPA module, collision avoidance and tactical awareness.
- Trawl door tracking and dynamic monitoring (Ixtrawl, Notus, ITI, ...).
- Pair Trawling module.
- Roxann / Seascan / JRC ground discrimination.
- Sedimentology and bathymetric Database.
- Wrecks Database.
- RADAR function with JRC or Koden antennas control.

TURBO is a stable and perennial solution existing for almost 20 years. SODENA equips more than 5,000 fishing ships and invests substantially and permanently in a Research & Development in order to provide its customers with the widest features range, while keeping what has made the TURBOWIN success: a ergonomic and easy-to-use solution.

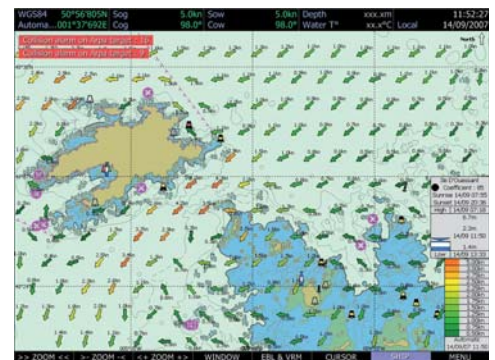
* Depending on RAM availability.



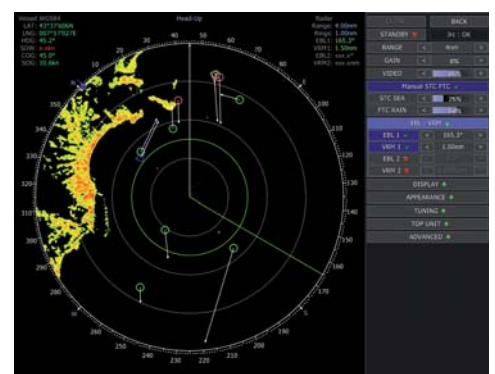
Geonet trawl display



Sedimentology and bathymetry database



Tidal database



TURBOWIN RADAR (JRC or Koden)

SODENA SAS

www.sodena.eu
leaflet@sodena.eu

