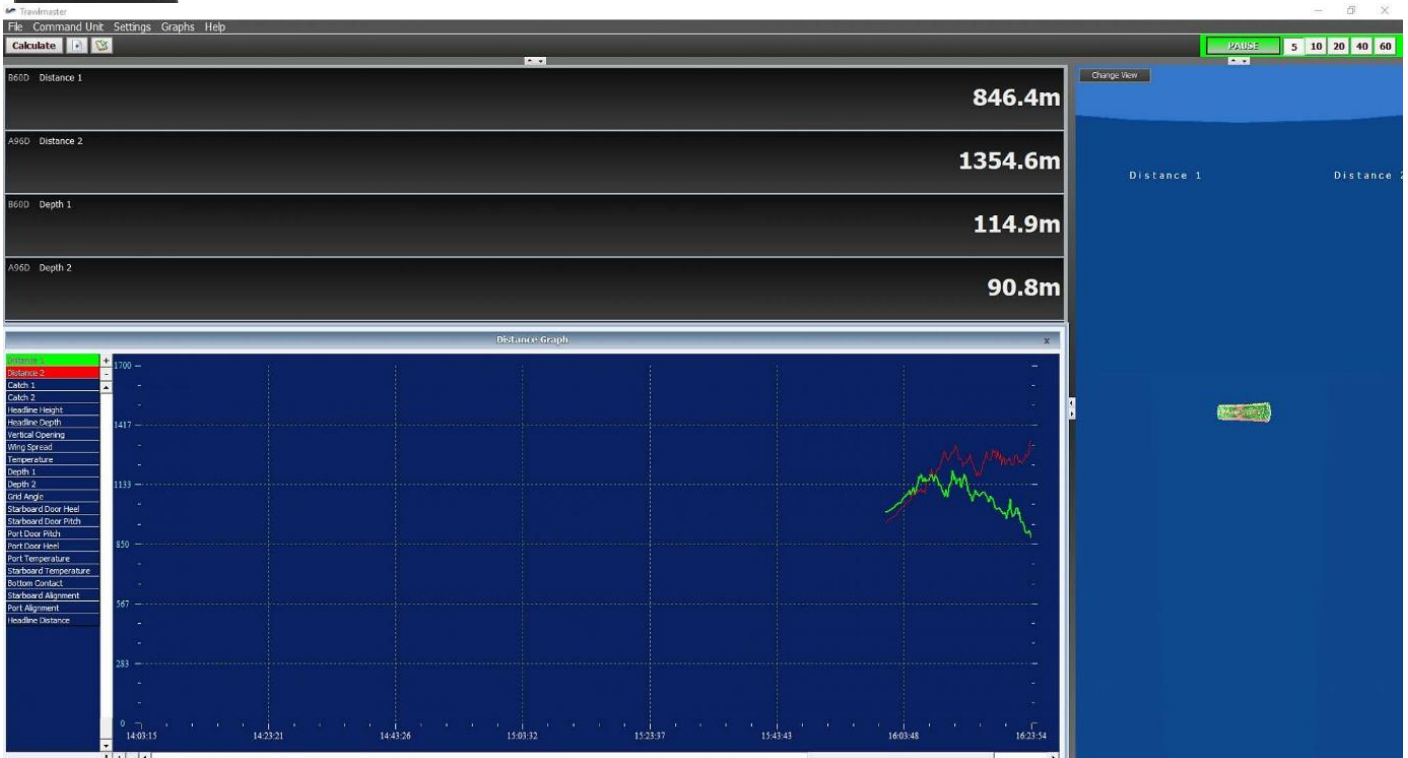


Transceiver (Command Unit) & Gearmaster 700 Software:



- Capabilities: 1000 code capability
- Frequency: 24 kHz
- Serial output to PC
- Power: 120 or 240 Vac
- Gearfinder 700 Software included, excludes PC

**Hydrophones**



**FOCUS HYDRPHONE**  
 Beam: 70° Vertical, 60° Horizontal  
 Range: 2,500+ meters



**OMNI HYDRPHONE**  
 Beam: Omnidirectional  
 Range: 700+ meters

### Sensor/s (701R Distance/Ranging sensor)



Omnidirectional Transmission (2-Way)

Frequency: 20-30kHz

Range: Up to 2,500 (or more) meters

Weight: 1.1 kg in water; or 2.4kg in air

Dimensions: 330 x 76.2mm

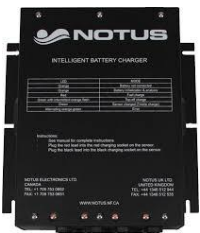
Deployable Depth: 1,500 m

Minimum resolution: 0.1m

Minimum accuracy: 0.5m

Optional: Temperature & Depth (additional cost)

### Charger

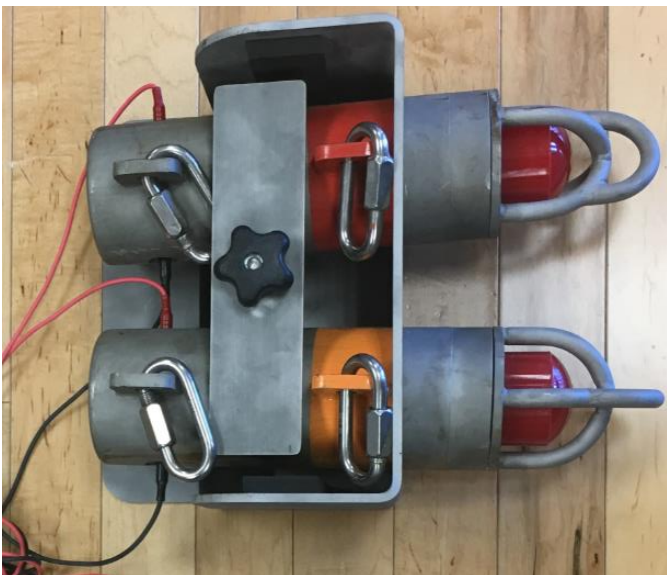


Power: 120 or 240 Vac

Charge Time: 90 minutes

Charges 1 to 4 sensors simultaneously

**Optional: Heavy Duty Stainless Sensor Housing & Charging Rack**



(It is recommended a heavy-duty steel cage be used, to help protect the sensor from impact damage)

### **Data Logging**

The Trawlmaster has enhanced logging capabilities. Logged Files can be saved in .txt or MS Excel format (for export). This may be of use to yourselves or attending scientists.

Following is a sample file of a user log:

- Sensor Code – unique ID to a specific sensor
- Placement – sensor location on the gear
- Time – the exact time the data was received
- Range – distance from the hydrophone to the sensor in meters
- Data – data from the sensor
- Latitude / Longitude – position from the GPS (assuming interfaced to ships GPS system/NMEA network)
- Echo Sounder – depth from the echo sounder (assuming interfaced to ships sounder system/NMEA network)
- Notes – annotation by user

### **About Notus**

NOTUS Electronics Ltd. is a developer and manufacturer of advanced net monitoring solutions for the commercial fishing industry.

NOTUS' head office is located in Newfoundland, Canada. Notus has been offering hydro acoustic solutions to researchers and commercial fishers for 25 years.

Established since 1992, the company has brought several sophisticated wireless monitoring systems to the market. The overall driving force behind development and marketing has been reliable products that remain affordable for all size vessels.

Notus manufactures all components. Software is also completed inhouse which makes the system very adaptable to user's specific needs.

<https://www.notus.ca/gearfinder-700>